

Parallel Publishing

Indications it is worth the effort

Department of Publishing Infrastructure

Linköping University Library

David Lawrence

www.ep.liu.se

ep@ep.liu.se

LiU

expanding reality

Parallel Publishing Activities at LiU

- Began late 2007
- Authors can do it themselves, but from the beginning LiU library has offered a centralized service
 - When the publisher’s pdf can be used, parallel publishing occurs “automatically”
 - In other cases, researchers are contacted: instructions to send appropriate file(s)
 - Library stays on top of copyright, linking, embargo... rules
- Centrally handled posts have much higher quality

Parallel Publishing Workflow

- Each week: list of the latest publications from Linköping from ISI (~monthly , lists from PubMed and Scopus)
- List is parsed automatically:
 - for the journal and Sherpa is used to determine the rules for parallel publishing
 - For Linköping authors, link made to personnel database
 - Email created and sent to all LiU authors when author input for parallel publishing required (**with VR etc warning**)
 - Publication registered in DiVA
- When publisher's pdf can be used, file is obtained from journal; otherwise wait for file(s) from authors
- Add title page (information auto-extracted from registered info in DiVA and Sherpa)
- Upload file

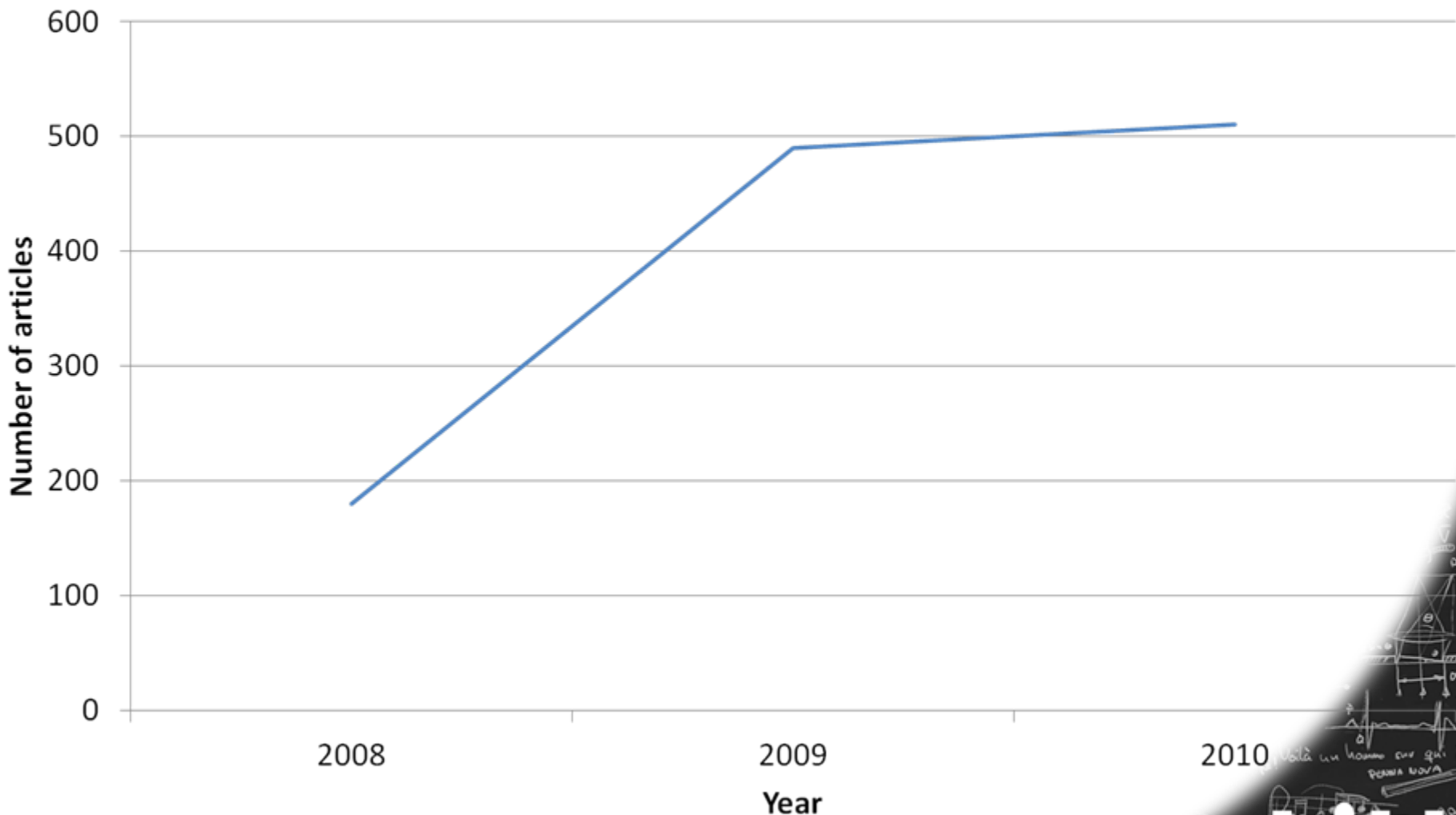
Time requirement

–For registering 30-35 publications and parallel publishing ~10 per week requires max 1 person day/week.

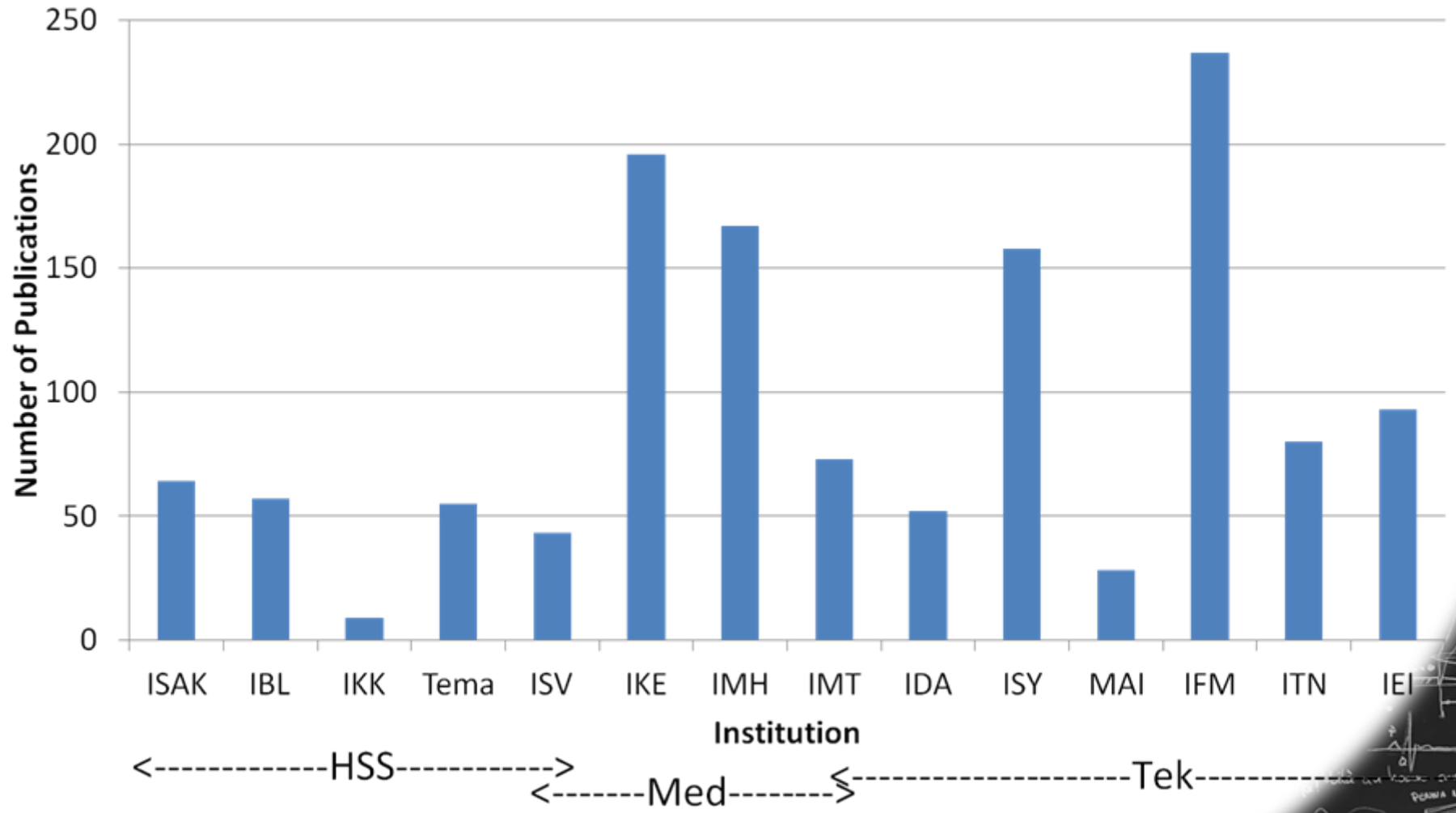
–Result:

Articles	Conference	Chapters	Books
970	211	153	44

Number of Parallel Published Articles in a Given Year



Number of Parallel Published Publications per Institution



Usage Data

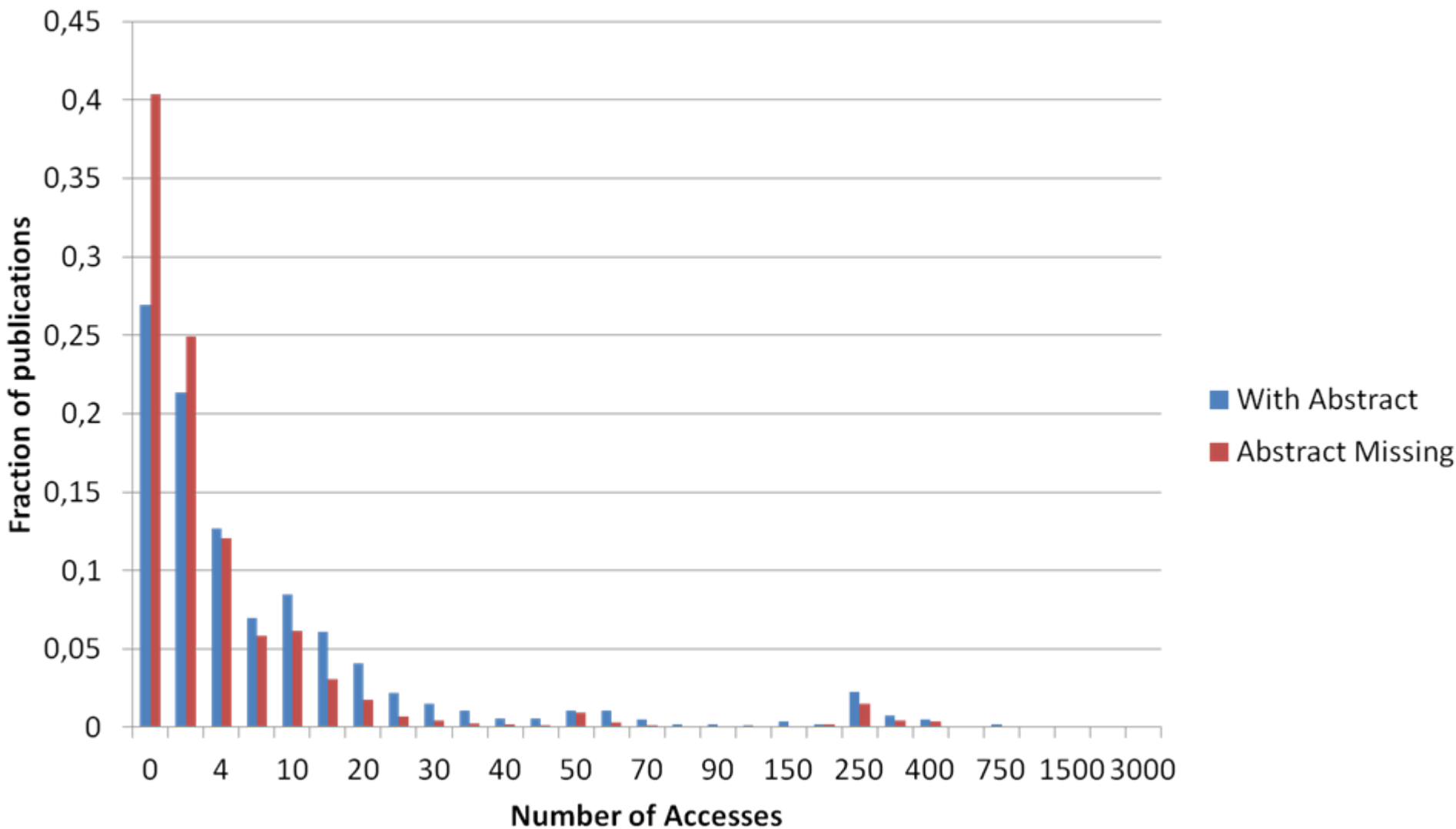
– Available:

- Hits on metadata for given record
- Number of downloads of pdf file

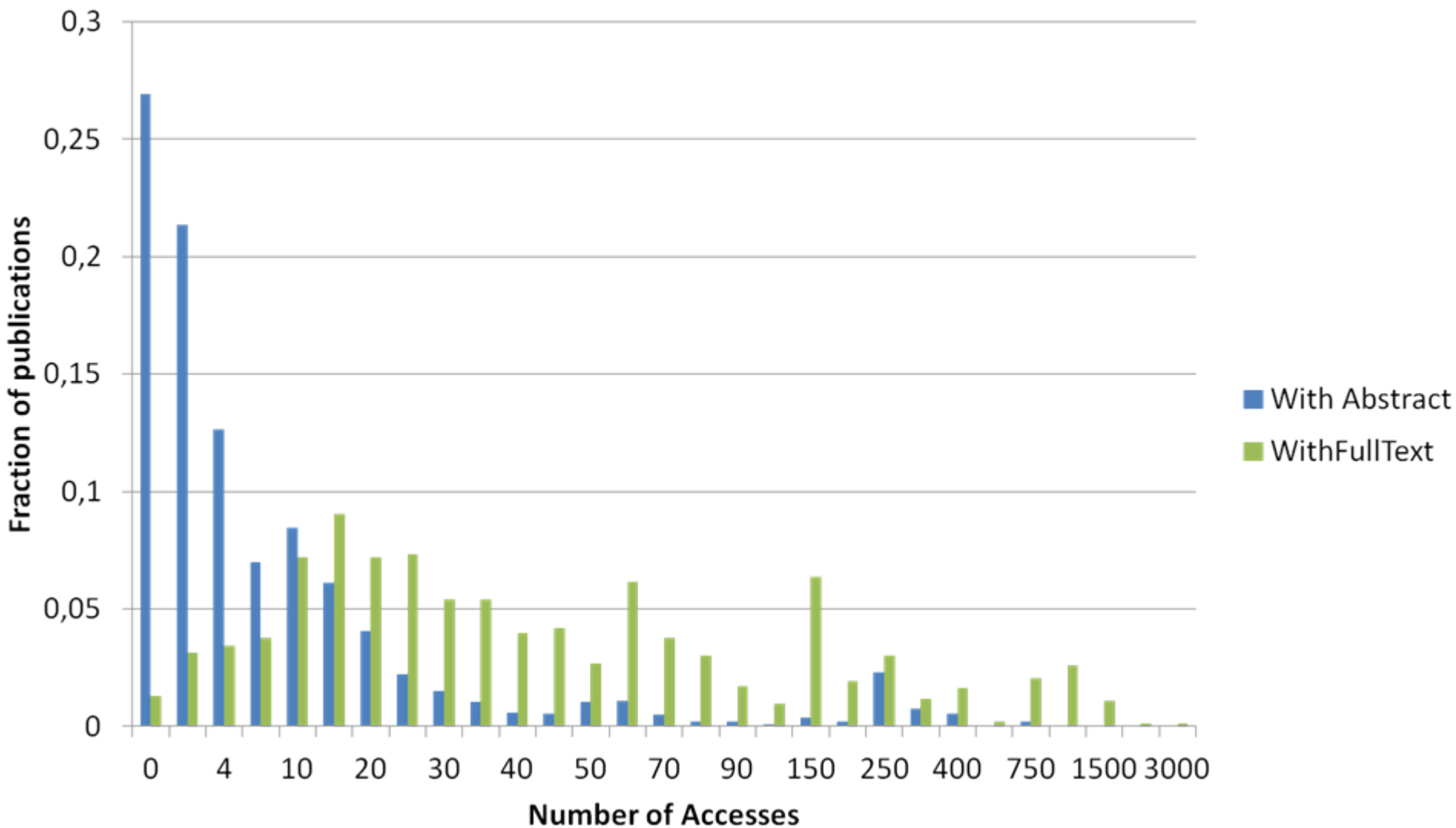
– Switch from local pub reg system to DiVA, occurred Oct 2009

- Means that usage data for the publications pre-dating then all has a common starting point

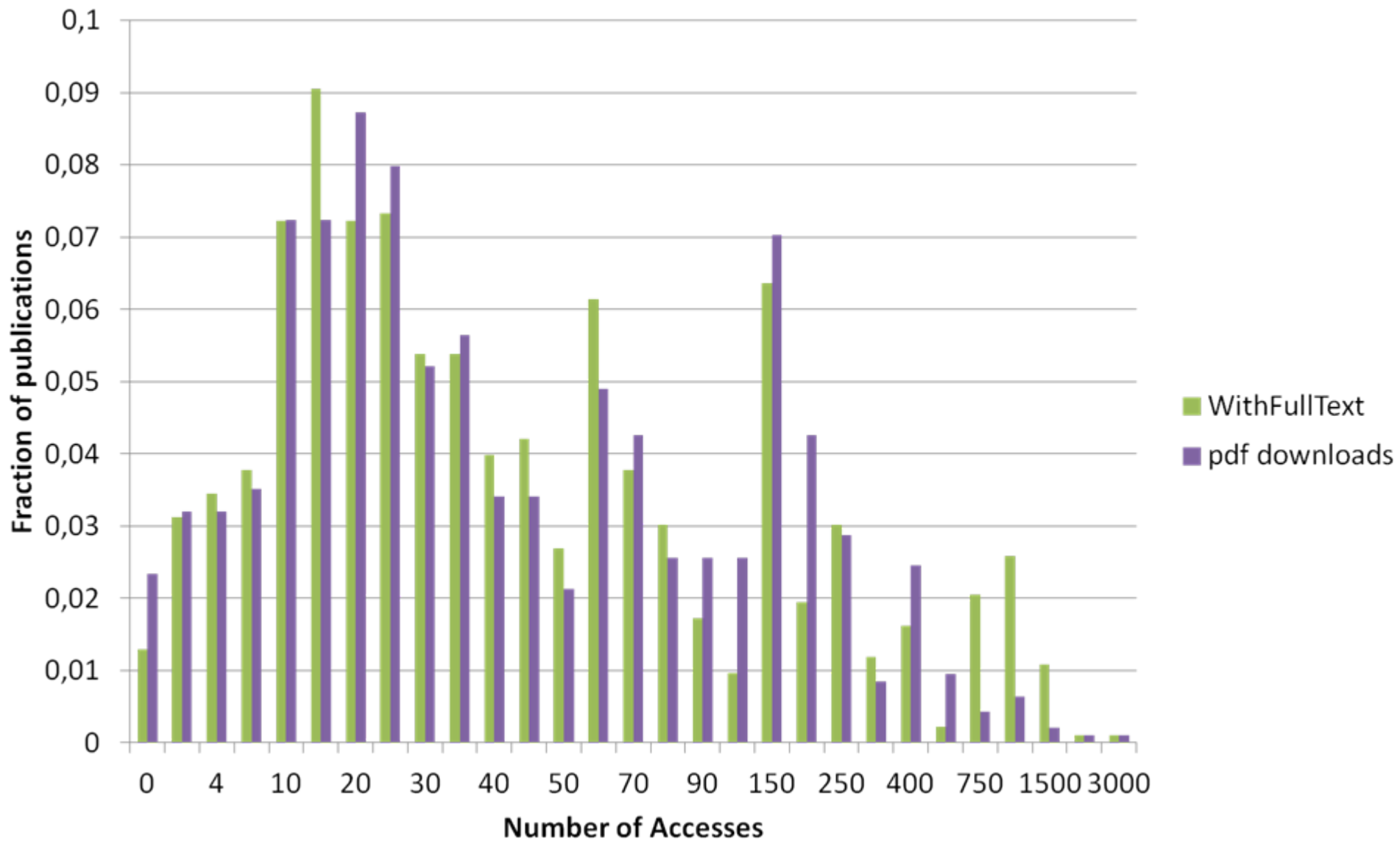
Distribution of Accesses to Metadata for Records with Varying Degree of Completeness. No Parallel Published Publications Included



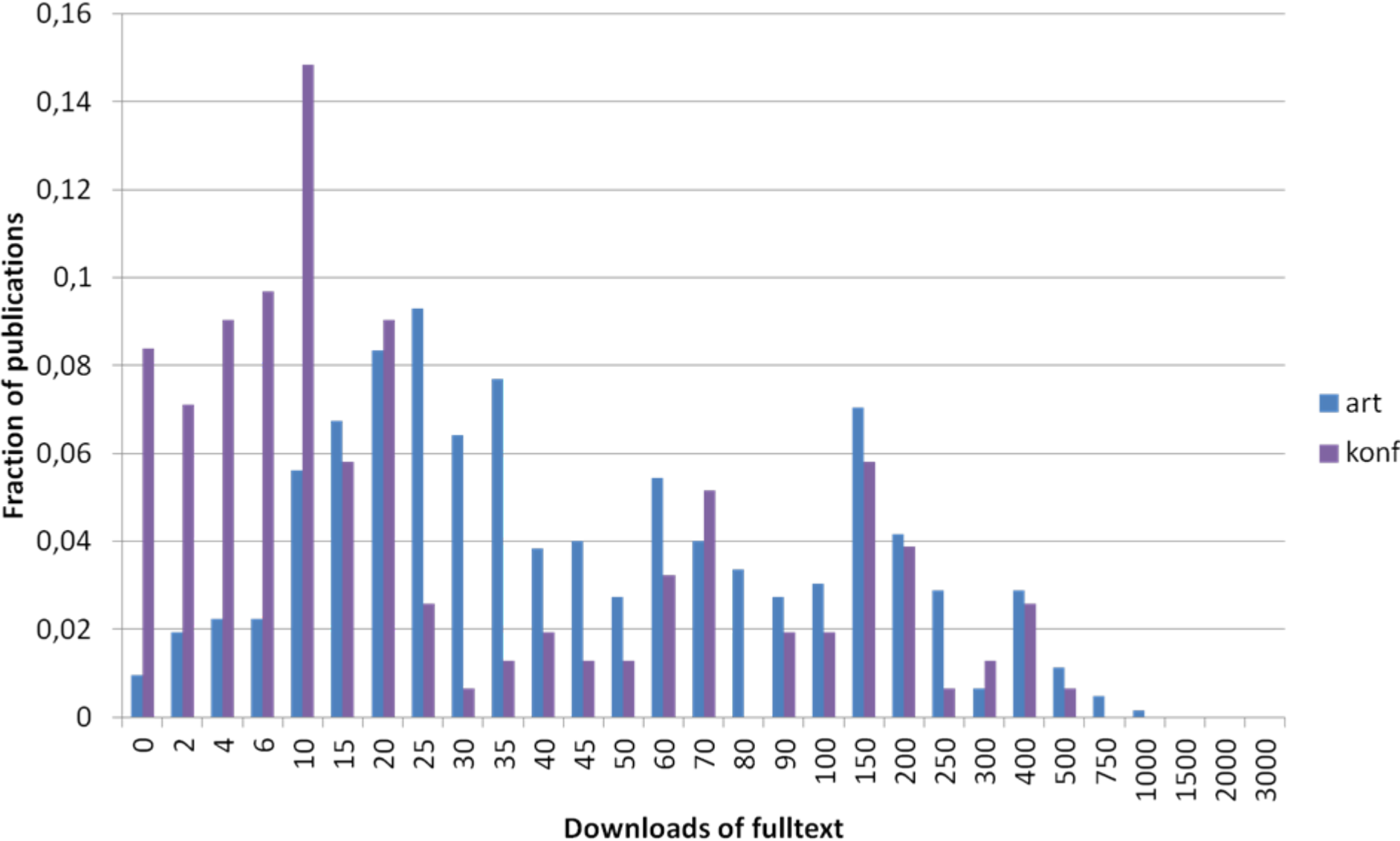
Distribution of Accesses to Metadata for Records with Varying Degree of Completeness.



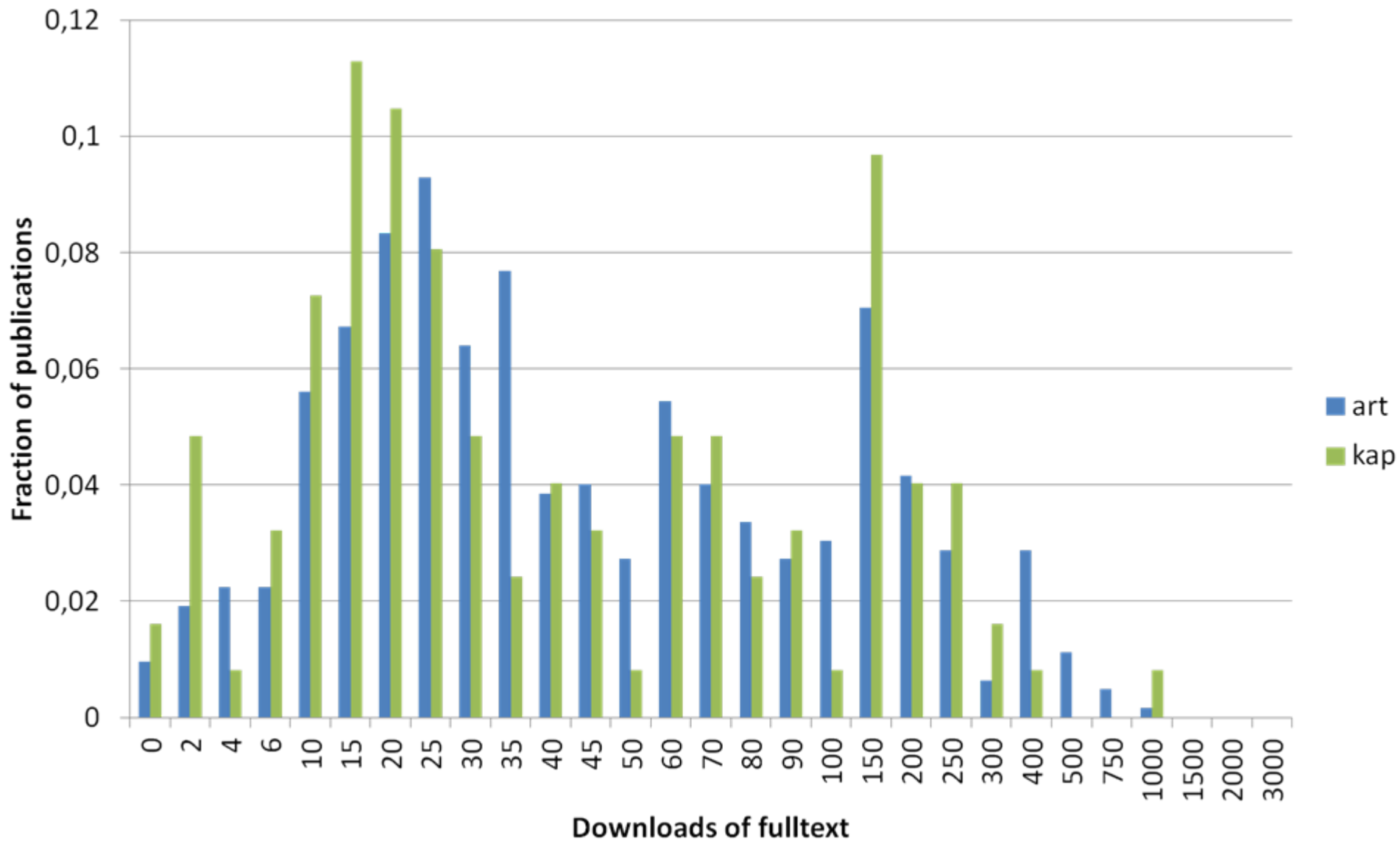
Distribution of Accesses to Metadata or Fulltext Downloads



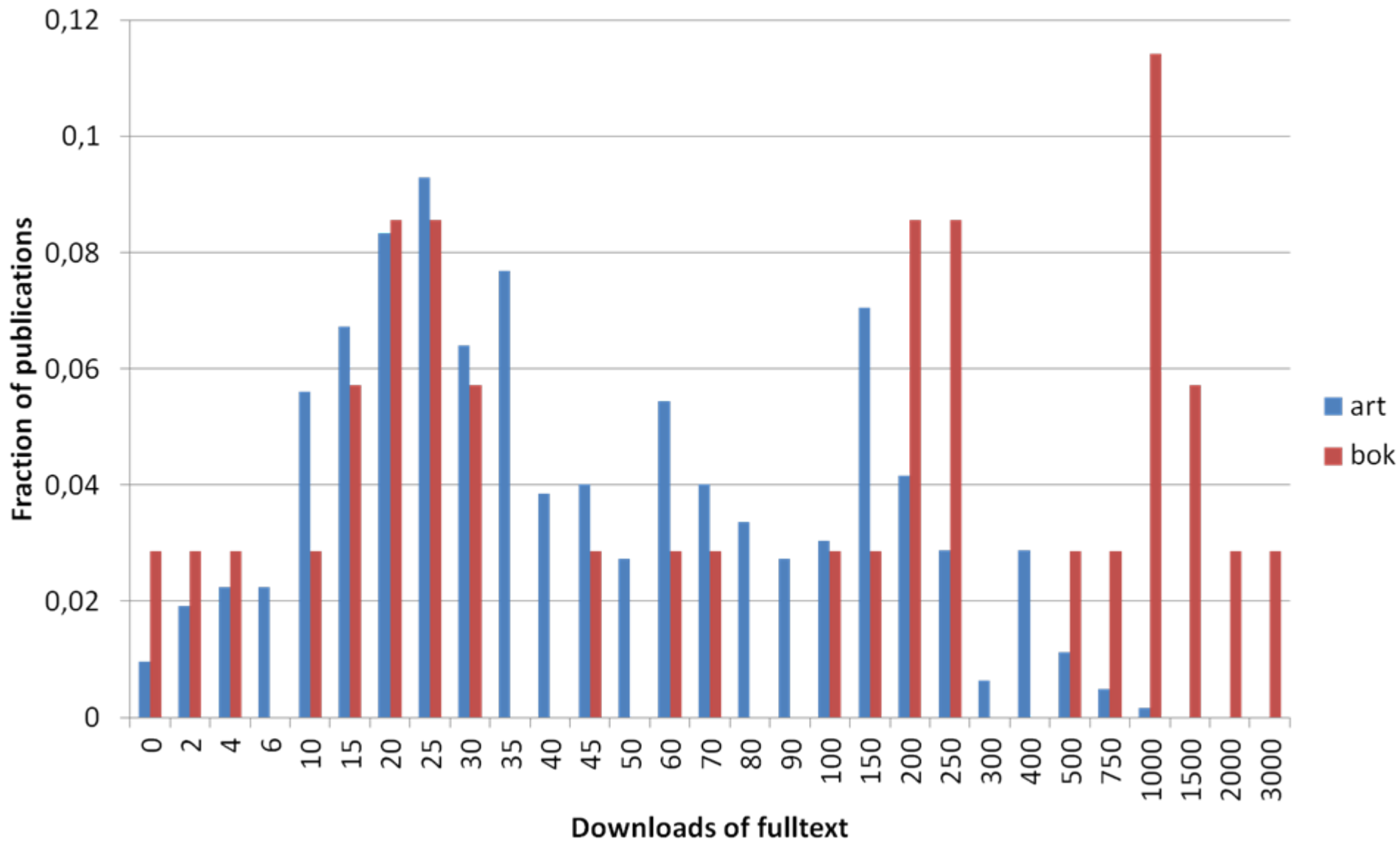
Distributions of Fulltext Downloads by Publication Type



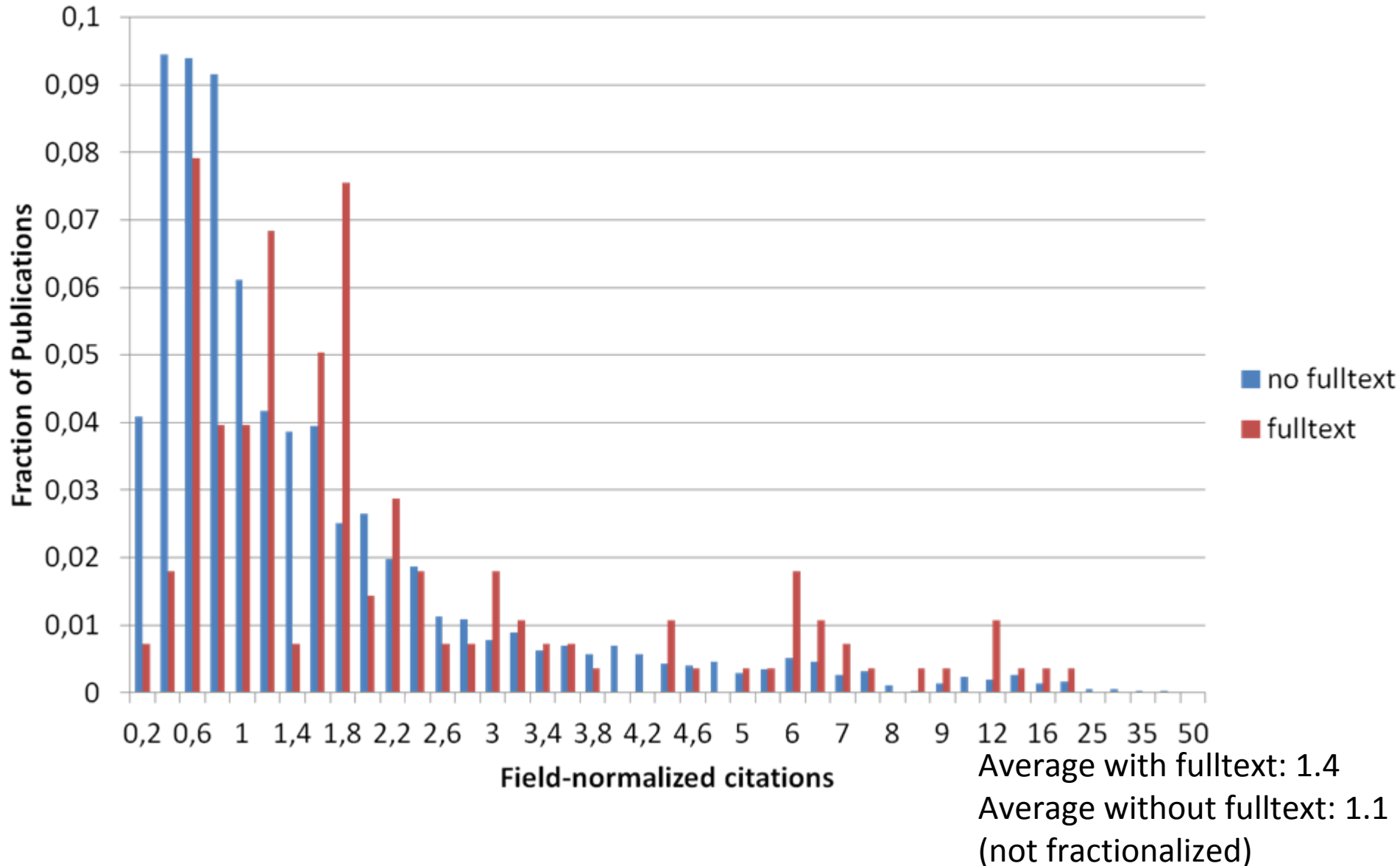
Distributions of Fulltext Downloads by Publication Type



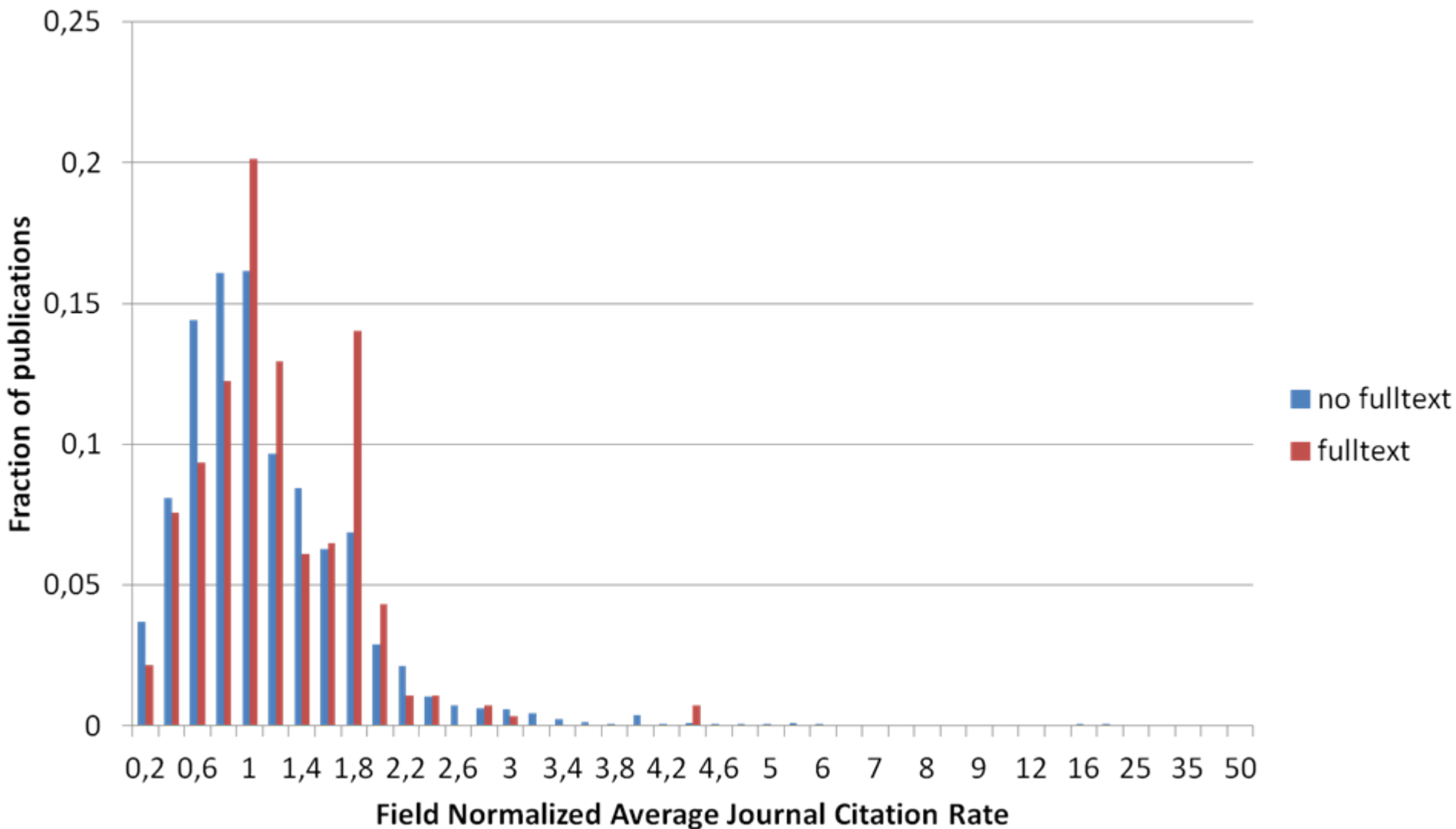
Distributions of Fulltext Downloads by Publication Type



Distribution of Field-Normalized Citations for Articles Published 2005-2008



Distribution of "Journal Crown" for Parallel published and non-Parallel published articles (2005-2008)



Average with fulltext: 1.08

Average without fulltext: 1.06

Summary

- Parallel publishing results in a significant increase in "hits" for a publication record in an IR
- Downloads of pdfs is of equal magnitude to record hits
- Citation rate of publications that have been parallel published is higher than that for all LiU publications (causation unclear)
- Next focus: highlight fulltext material...