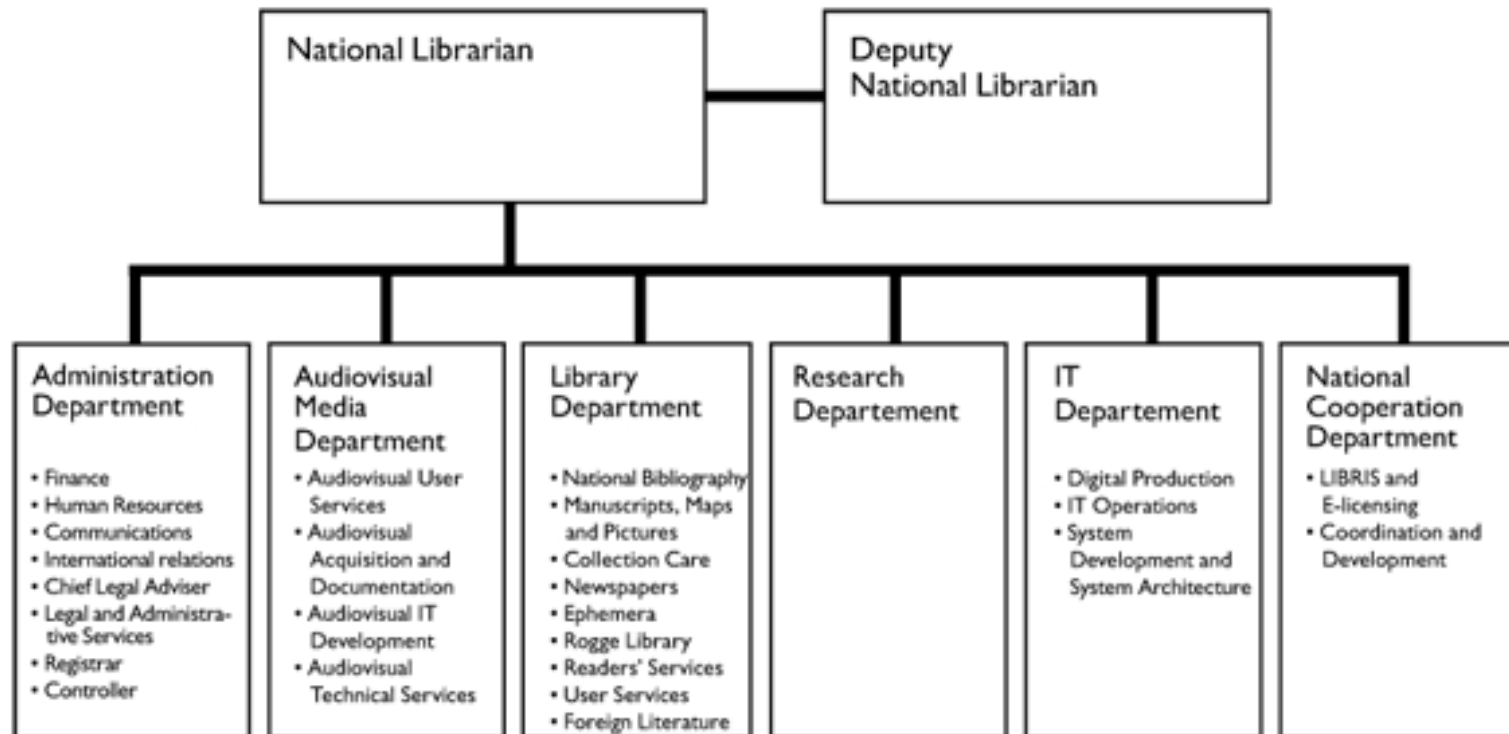
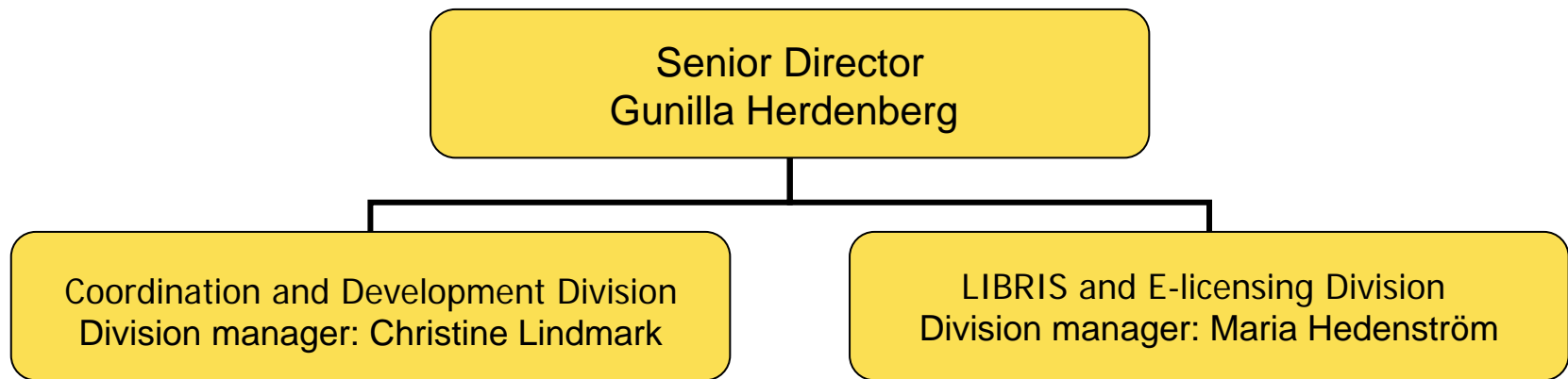


The National Cooperation Department and the Influence Structure

The National Library of Sweden



National Cooperation Department



Approximately 40 co-workers

National cooperation - assignment

Improve and render the information support for higher education and research more effective. Actively work with development issues within the national library's field of activities, in cooperation with external parties. The National Library of Sweden received a special coordination assignment which concerns all publically funded libraries, (in accordance with a government decision of 17 December 2009).

The Coordination and Development Division

- Works with reports, library statistics, provides development support for projects etc.

The LIBRIS and E-licensing Division

- Responsible for the operation and development of LIBRIS national library systems and procures central licences for electronic journals and databases.

LIBRIS national library system

The systems are built upon cooperation between the participating libraries, where the core is made up of the Swedish publically financed libraries within higher education and research.

- The **national union catalogue**
- **Interlibrary loans** (loans between libraries)
- **Search services** and other **auxiliary services** such as export of catalogue records, export routines for interlibrary loans, export of e-journals, routines for loan status, LIBRIS via Z39.50 and operation routines

<http://www.kb.se/libris/>

LIBRIS search services

- **LIBRIS (web search)**, six million titles from Swedish research libraries
- **Sondera**, search simultaneously in the national library catalogue LIBRIS, in the database for the Swedish archives, NAD and in Swedish Media Database, SMDB
- **SwePub**, search among scholarly articles, conference papers and dissertations etc. Many of the publications are freely available in full text.
- **LIBRIS uppsök**, Swedish electronically published theses and student papers in full text
- **bibliotek.se**, co-operation between The National Library of Sweden/LIBRIS and Bibliotekstjänst AB, free search in the research libraries and public library collections
- **LIBRIS library database**, information about libraries connected to LIBRIS

<http://www.kb.se/english/find/regina-libris/services/>

The BIBSAM consortium, licenses for electronic resources

The licensing activity

Access to electronic information resources

- The National Library of Sweden negotiates licence agreements for electronic journals, databases, e-books, and reference works. The Swedish universities and university colleges can join as well as libraries connected to non-academic public research institutions. These institutions form the BIBSAM consortium.

The activities during 2010

- 4,5 full-time administrative officers
- 65 participating libraries
- Approx. 30 agreements

The steering committee for national licences for e-resources

- Consists of seven representatives for universities and university colleges. The group is responsible for developing strategies and overall principles regarding content, price models and who is allowed to participate in the consortium.

E-publishing within higher education - Open access

- The program OpenAccess.se (OA) is intended to promote maximum accessibility and visibility of works produced by researchers, teachers and students by supporting the electronic publishing in Swedish institutions of higher education.
- The program was implemented during 2006-2009 by the National Library in partnership with the Association of Swedish Higher Education, the Swedish Research Council, the Royal Swedish Academy of the Sciences and The Swedish Knowledge Foundation.
- The program has recently been evaluated by international experts and the National Library of Sweden is now discussing the orientation and organization of a continued program with other interested parties. The evaluation, see http://www.kb.se/OpenAccess_english/OA-News/Post.aspx
- Website, pages in English: <http://www.kb.se/OpenAccess/Hjalptexter/English/>

Supports library development

- The department collects and processes statistics about the research libraries
- Works with bibliographic coordination and development
- Compiles reports and evaluations
- Coordinates parts of the Swedish further education for librarians in cooperation with a number of different parties

Library cooperation

- national and international

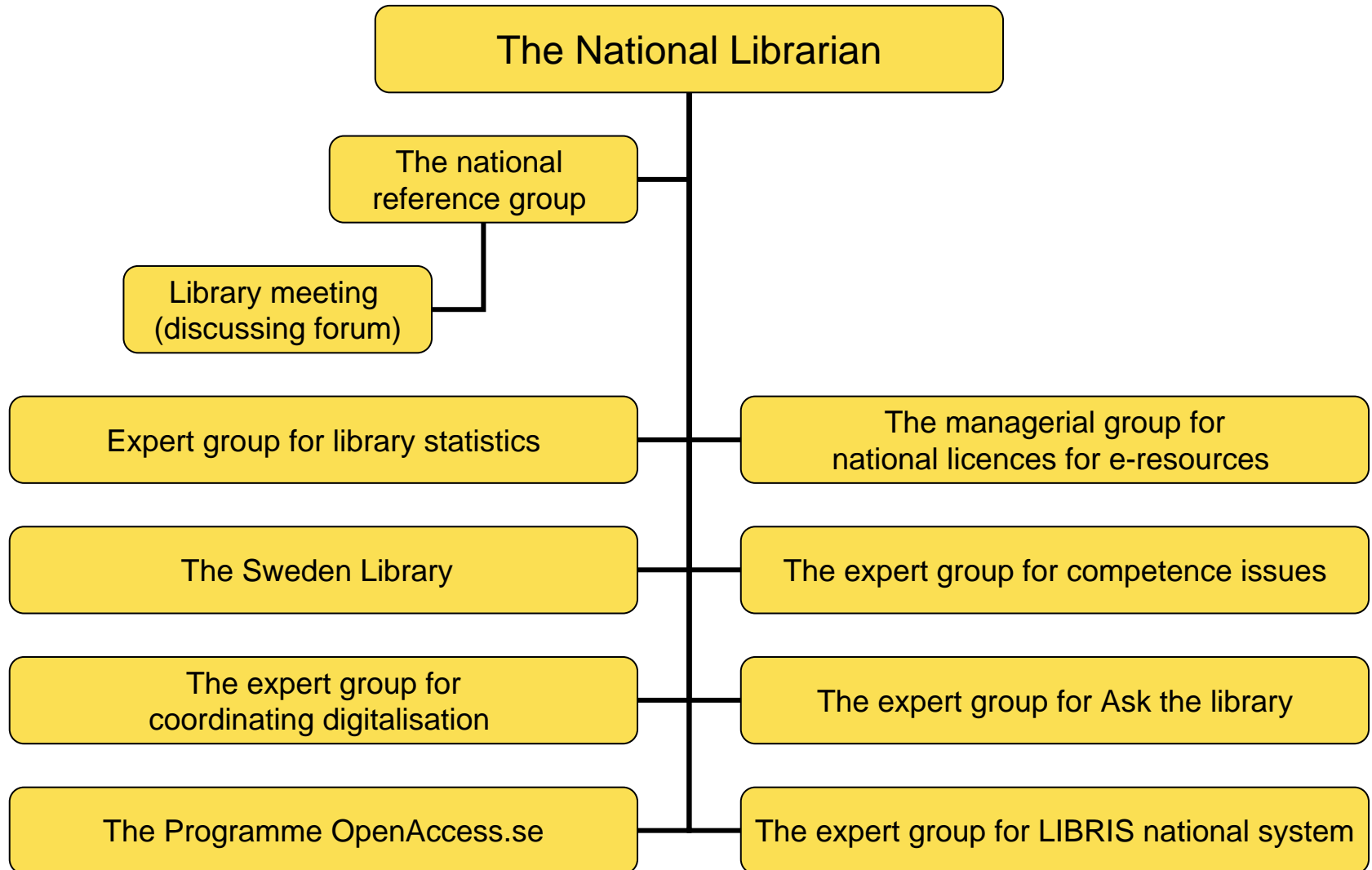
- supports the libraries' interlibrary loan cooperation
- Works for the development of library activities in international projects (most recently in Central America, Viet Nam and Laos)

More about the work: www.kb.se/om/organisation/samverkan/

Influence structure of The Swedish National Library

- National reference group
- Expert groups/managerial groups
- Annual national meeting

... Influence structure



National reference group

- Advisors and referral body for the National Librarian concerning large strategical issues
- A channel for The Swedish National Library in work with developing contacts with libraries, archives, museums, other authorities, publishers and other information producers. Helps The Swedish National Library strengthen its role and activity.
- Four meetings per year

Current expert groups

- National reference group
- The expert group for library statistics
- The Sweden Library (national library consultation)
- The expert group for coordinating digitalisation
- The expert group for Ask the library
- The expert group for LIBRIS national system
- The managerial group for national licences for e-resources
 - The reference group for the Digital map library
 - The work group at The Swedish National Library
- The expert group for competence issues

An expert group...

- created from the requirements which exist for strategical development within different fields
- represents the co-operation partners of The Swedish National Library
- has an external library manager as chairman and administrative official during National cooperation as secretary
- makes decisions in ongoing issues within the group's field
- is advisory before large discussions and proposals for decisions in the National reference group
- collects and initiates important development issues within its field

Expert group, continued...

- Term of office: 2 years (with the possibility of extension 1 year)
- Annual self evaluation
- Final evaluation can be done if necessary, by an external evaluator
 - Has The Swedish National Library received the required support and feedback on presented issues?
 - Have the libraries had the influence The Swedish National Library wanted and the libraries required?

Memoranda from the expert groups' meetings:

<http://www.kb.se/bibliotek/referensgrupper/>

The national meeting

- Forum for current issues, strategical discussions and meeting over the sector borders
- Target groups: managers at the university- and college libraries, managers for the special libraries, chairmen and secretaries in The Swedish National Library's expert groups, the library managers for the public libraries in Umeå, Stockholm, Gothenburg and Malmö, representatives for the Swedish Arts Council, the general secretary for the Swedish Library association, The Swedish Library of Talking Books and Braille (TPB) and Swedish Association for Information Specialists (SFIS)
- One day meeting during the autumn

Read more...

- About the influence structure, the expert groups and the library meeting:

http://www.kb.se/Dokument/Bibliotek/referensgrupper/Inflytandestruktur_KB_senaste.pdf